

VILLA MEDICI: TUSCANY



Type: Holiday villa

Availability: All year

Location: Chianti

Sleeps: 12

Area of grounds: 18 acres

Bedrooms: 8

Bathrooms: 6 + 1

Swimming-pool: 14 x 7 mtrs

The universally known Medici heraldic crest above the door proclaims this villa to be one of the series of Medici villas built by the Florentine family to impose and reinforce its status from the Renaissance onwards. This particular villa, built in the seventeenth century, has like all the others passed into other ownership, but the sense of history and power remains. Approached uphill along a fine avenue of cypresses and lavender, the villa stands magnificently flanked by formal Italianate gardens. Tinkling fountains and former stable buildings remind visitors of a glorious past, yet the modern conveniences of **pool and tennis court** are seamlessly blended into the perfectly landscaped 20 acres of grounds, rich in groves of olive and evergreen oak. No less a sensation greets you on entering the villa. The

antique furniture, the room proportions and the painted ceilings fit easily with the modern luxuries of air conditioning in the upper bedrooms, ADSL internet connection and plasma screen satellite TVs. Guests staying at the villa will be pampered by a **staff of a maid, a cook and two gardeners**. These will prepare and serve all meals, only the purchase costs of the ingredients being charged to guests. It is a two floor XVII century villa located a mere 20 km southwest from Florence City centre, on one of the various countryside residences belonging to the de' Medici family. to the villa.

All bedrooms have their bathrooms, there is air-conditioning in the top floor, SAT TV in various rooms, and broadband internet connection.



TECHNICAL DESCRIPTION:

Ground Floor: Entrance is into a large hall. To the right there is a large living room with fireplace. This leads onto a spacious TV room. To the left of the entrance hall the dining room. A stairway descending to the semi basement level leads to the fully equipped kitchen which has an adjoining breakfast room. The ground floor is completed by a service bathroom.

First Floor: From the ground floor a double stairway each of 11 steps lead to the second floor into a central large room with a writing desk off from which lead the various bedrooms. There is a double bedroom with en suite bathroom with shower. Then the master double bedroom with an en suite and very spacious bathroom with both shower and tub. This bedroom also has access to a study room with TV. From the study, a door leads into a single bedroom. This single bedroom shares a bathroom with tub with a twin bedroom which completes the floor.

Second Floor: Another double stairway takes you to the second floor. Here too is a large central room with a writing desk and a couch leading to 4 more bedrooms. This floor has air conditioning throughout. There is a mini suite with a king size bed, a walk in closet and an en suite bathroom with tub. Then two twin bedrooms with their en suite bathrooms with tub. To finish, a single bedroom sharing a bathroom with one of the twins for children and the other with a French size bed, ideal for the nanny. Both bedrooms have en suite bathrooms.



Distances:

Nearest shop	1 kms	Pisa	65 kms
Lastra a Signa	4 kms	Lucca	80 kms
Cerbaia	12 kms	Siena	87 kms
Greve in Chianti	47 kms	<u>Nearest Airports:</u>	
San Gimignano	66 kms	Florence	15 kms
Forte dei Marmi	120 kms	Pisa	65 kms

● Villa location



Living room



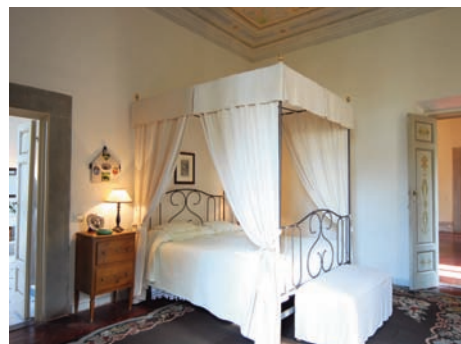
Dining room



Entrance



Bedroom



Bedroom 1



Bedroom 2